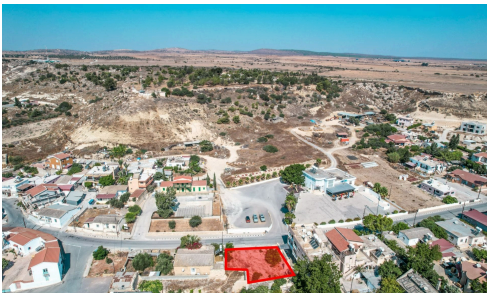


#2187



 Pyla, Larnaca

€60,000 +VAT

This property is located in a very residential area of Pyla. Pyla is a very popular village in Larnaca and has a very good location near to all amenities, restaurants, cafe, banks and within short driving distance to Larnaca bay and the beach.

The area of the property is characterized as residential, with various developments, such as middle-income house and three-storey apartment complexes. The plot is of a total area of 370 sq.m. and has a building factor of 120% with a max allowance of 3 floors.

Title Deeds available.

Area

 **370 m²**

