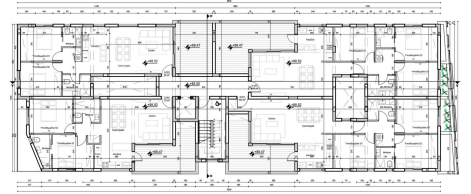


#13283



## Apartment in Erimi, Limassol

€240,000 +VAT

 Erimi, Limassol

A modern residential project in Erimi, designed around simple architecture, practical layouts, and highly accessible pricing. The project offers a straightforward, value-driven housing option for buyers who want a new home without unnecessary cost or overcomplicated design.

The building follows a clean architectural approach, with simple lines, balanced proportions, and a calm residential character. Its design is intentionally practical and understated, focusing on everyday usability, durability, and affordability.

Bedrooms

 2

Bathrooms

 2

Covered

 80 m<sup>2</sup>

Energy efficiency rating

 A

