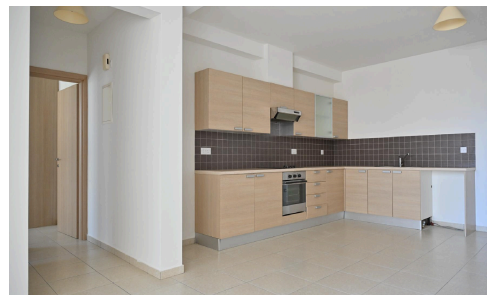
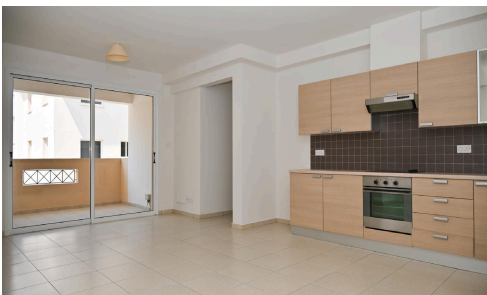


#13132



Apartment in Pyla, Larnaca

€120,000

 Pyla, Larnaca

One -bedroom apartment in an attractive location in the community of Pyla in the Larnaca District, approximately 140 meters west of UCLAN University and approximately 900 meters west of Larnaca - Ayia Napa motorway.

The development is ideally located close to all necessary services and amenities. In addition, it enjoys excellent access to the motorway. The immediate area of the property is in high demand for apartments due to the presence of the University and its proximity to the tourist area of Oroklini.

The apartment is located on the 1st floor of a complex, which was built in 2008. It consists of an open-plan kitchen/

Bedrooms

 1

Bathrooms

 1

Covered

 57 m²

