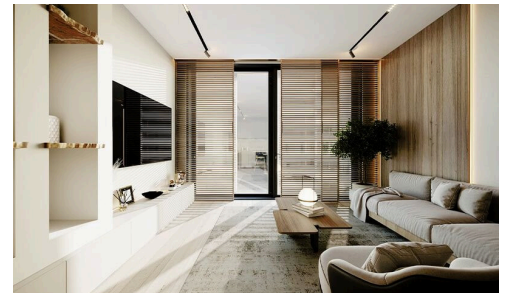


#12443



Apartment in Pyla, Larnaca

€242,583 +VAT

 Pyla, Larnaca

A new development which will consist of 6 buildings, each named after a type of pearl, the project includes 119 residential units distinguished by its strategic location near the beach and the British University of Central Lancashire, as well as a wide range of service facilities.

The residential units feature elegant interior designs that meet the needs of those seeking a modern lifestyle, with options ranging from 1 – 3 bedrooms. The gated compound ensures high levels of security and privacy for its residents and offers after-sales services such as facility management and rentals. Additionally, homeowners can benefit from flexible payment plans to suit all financial needs.

Bedrooms

 2

Bathrooms

 2

Covered

 79.8 m²

Energy efficiency rating

 A

